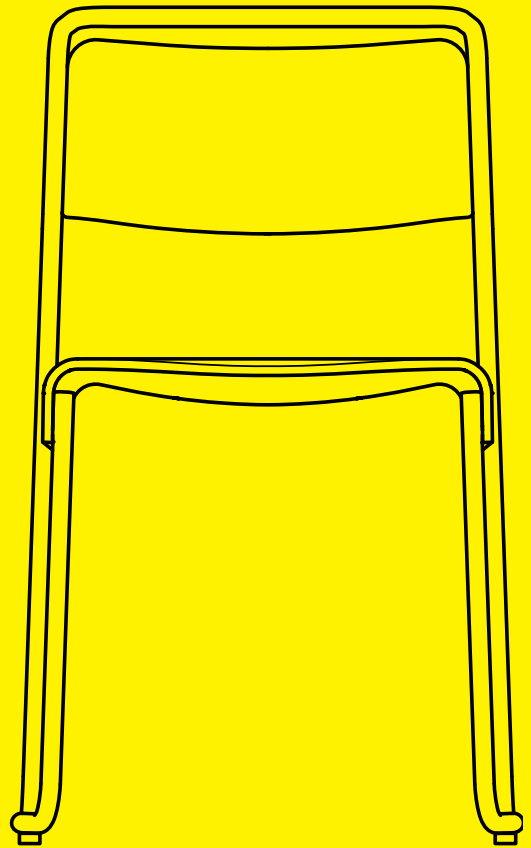
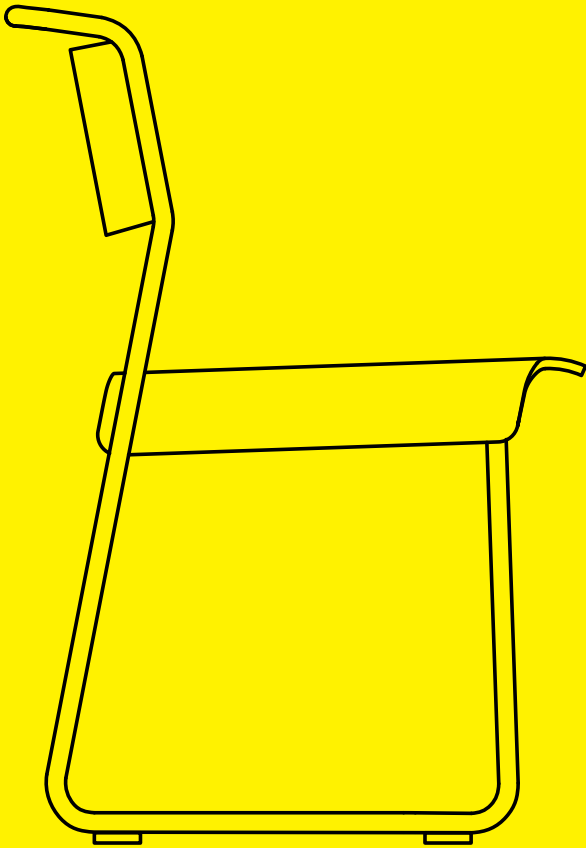




VERY GOOD AND PROPER 'Measure twice, cut once'

www.verygoodandproper.co.uk

CANTEEN UTILITY CHAIR





Light weight, stackable, and versatile – the *Canteen Utility Chair* is inspired by the ubiquitous and familiar post-war school chair.

The design retains the look and feel of the classic archetype, subtly updating and streamlining it for the contemporary contract furniture market.

Recent advances in manufacturing and fixing technology have enabled us to neatly join the powder coated steel frame to both the pressed beech plywood seat and back, with minimal visual impact.

Materials

Beech plywood is an exemplary material, particularly suitable for the production of the moulded parts used in the *Canteen Utility Chair*. The mechanical properties of beech include hardness, durability, elasticity and strength. Along with its inherent colour, these create curved parts that are aesthetically attractive, versatile, and natural.

The tubular steel frame of the *Canteen Utility Chair* is made in the UK from one continuous length of steel tubing. This design requires no welding, which achieves a visually clean and strong construction.



Clockwise from top left:
 Invisible fixings on backrest
 Mechanical fixings on back leg
 Back edge of seat
 Front lip of seat

Fixings:
 All the fixings on the 'Canteen Utility Chair' are mechanical, there is no welding on any part of the chair. This means parts can be easily replaced / swapped over if necessary.

**Custom Plywood Finish**

For orders of over 50, the moulded plywood parts of the Canteen Utility Chair can be produced to specific customer requirements. For example, they can be colour stained, varnished, or covered with a layer of sliced veneer of another wood species (oak/maple/walnut/cherry/ash). All custom finishes are quoted for on a case by case basis.

Custom Steel Frame Finish

For orders of over 50, we can produce the frame to your requirements. Our standard finish is a powder coated polyester, however – being steel – there are also several other surface treatments available, including chrome, galvanized and brushed. All custom finishes are quoted for on a case by case basis.



Our beech plywood parts are processed from the Spessart forest in Northern Bavaria and from the Zala area in Hungary. They are harvested from sustainably managed forests, with FSC certification (certificate available on request).

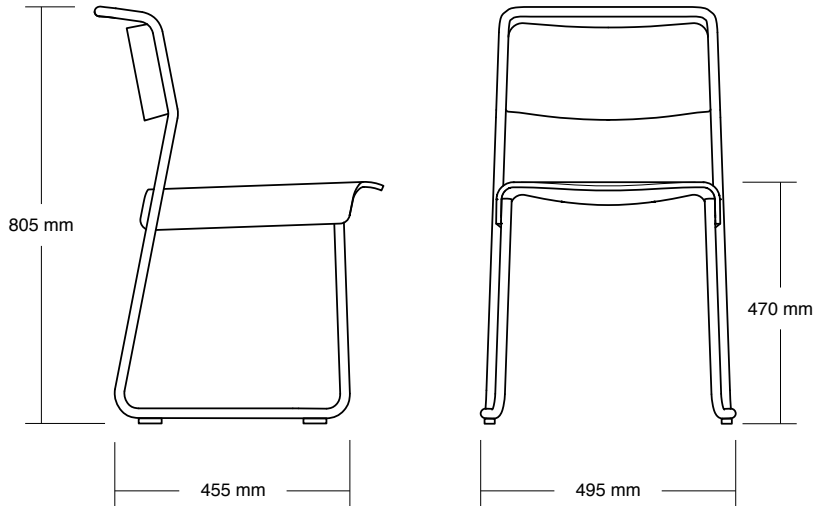
Our supplier of tubing has a comprehensive Environmental Policy in place. This Environmental Policy has been designed to comply with the

Eco-Management Audit Scheme (EMAS). Having our supplier based in the UK means we drastically reduce the amount of miles our product travels before getting to market. As a result the carbon footprint is kept to a minimum.





INFORMATION



Technical

Weight / 5 Kg

Stack / Max recommended 4

Materials / Beech Plywood / Steel

Shipping

4 Chairs per Box

Box size / 55 x 75 x 105 cm

Box Weight / 25 kg

Pallet / 2x boxes fit on a standard Euro pallet 110 x 90 cm

Standard Frame Colours

Grey White
RAL 9002

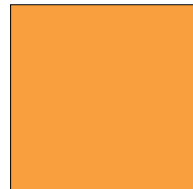
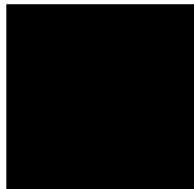
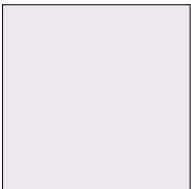
Jet Black
RAL 9005

Mint Turquoise
RAL 6033

Telemagenta
RAL 4010

Melon Yellow
RAL 1028

Yellow Green
RAL 6018



Standard Seat / Back Finish

Beech

Satin Lacquered

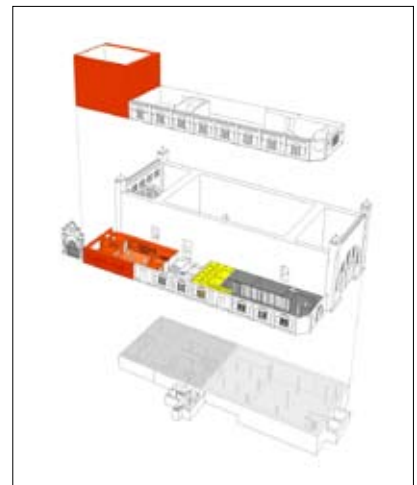


Custom Finishes

Frame / Seat / Back

To customer specification for orders over 50.





Architects

Tham & Videgård Arkitekter 2010